



RODOBAL

ROD ENDS - SPHERICAL BEARINGS

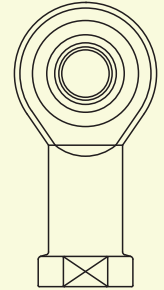
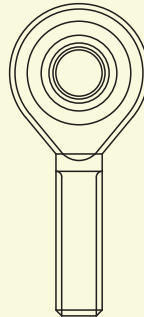
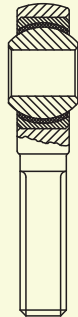


DIN 648 K

size 6 mm → size 25 mm
standard, fine and special threads

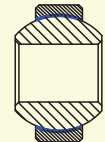
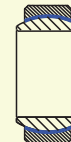
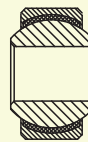
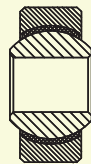
wide series
breite Reihe
série large
serie larga

special form rod ends
Sonderformen
embouts formes spéciales
teste a snodo forme speciali



RM..MTE
RML..MTE

RF..MTE
RFL..MTE



RS..MTE
RS..MTA

RG..MTE

GE..MTE

GEH..MTE

examples of special parts

RM 18 MTHE

metric high misalignment

RM 25X-1

25 mm male
regreasable,
impact and wear resistant,

for off-road applications

motorcycles specials

aluminum body, 6 mm size

RF..SE.AL, female

RM..SE.AL, male



RF 8 SE.82

space saving,
for steering dampers



DIN 71802



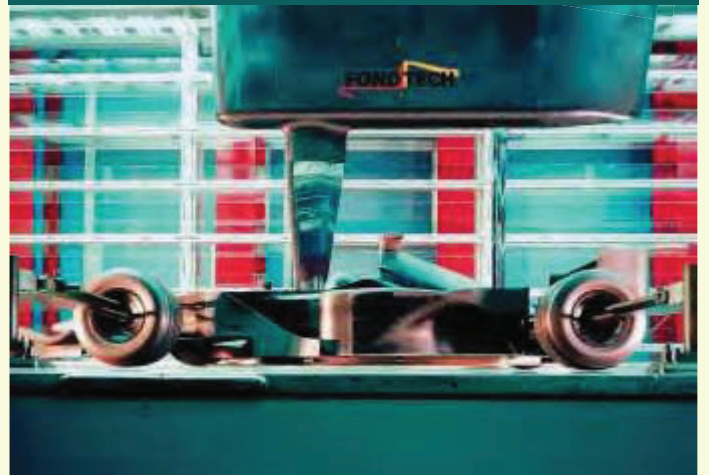
DIN 648 K
wide series

DIN 648 E
narrow series

DIN 648 G
high angle series

wind tunnel miniature rod ends

small sizes, bore 2 mm,
3 mm, 4 mm and 5 mm,
smooth and precision fit
for scaled models and testing rigs
used in wind tunnels



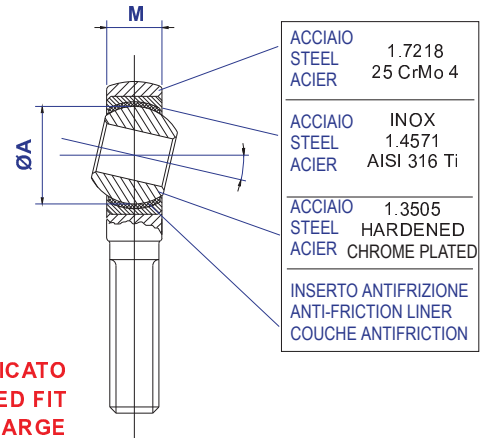
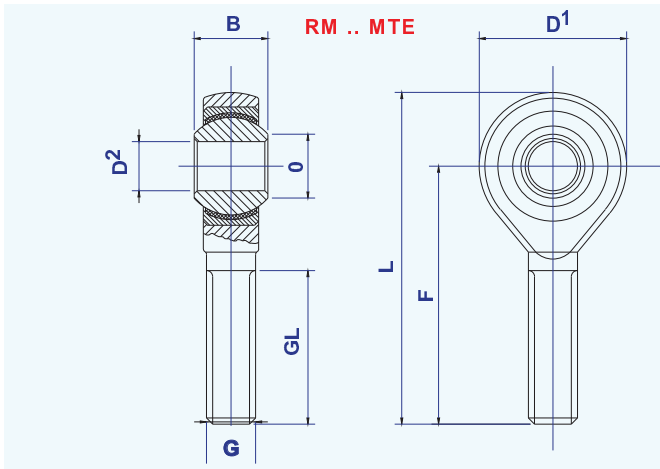
RODOBAL

ROD ENDS and SPHERICAL BEARINGS

serie per
MOTORSPORT

MOTORSPORT
range

séries pour
MOTORSPORT



TIPO - TYPE	D ²	B	M	O	D ¹	F	L	Ø A	G	GL		daN	massa
TOLLERANZA - TOLERANCE	H7				h6							carico stat. max.	
RM 6 MTE	6	9	6,75	8,9	20	36	46	12,700	M6x1	22	13°	980	20 g
RM 8 MTE	8	12	9	10,4	24	42	54	15,875	M8x1,25	25	13°	1.950	33 g
RM 8 MTE x1	8	12	9	10,4	24	42	54	15,875	M8x1	25	13°	1.950	33 g
RM 10 MTE	10	14	10,5	12,9	28	48	62	19,050	M10x1,5	29	13°	3.140	56 g
RM 10 MTE x1	10	14	11	12,9	28	48	62	19,050	M10x1	29	13°	3.140	56 g
RM 10 MTE x1,25	10	14	11	12,9	28	48	62	19,050	M10x1,25	29	13°	3.140	56 g
RM 10.8 MTE x1	8	14	11	12,9	28	48	62	19,050	M10x1	29	13°	3.140	60 g
RM 12 MTE	12	16	12,0	15,4	32	54	70	22,225	M12x1,75	33	13°	4.220	87 g
RM 12 MTE x1,25	12	16	12	15,4	32	54	70	22,225	M12x1,25	33	13°	4.220	87 g
RM 12 MTE x1,5	12	16	12	15,4	32	54	70	22,225	M12x1,5	33	13°	4.220	87 g
RM 12.10 MTE x1,5	10	16	12	15,4	32	54	70	22,225	M12x1,5	33	13°	4.220	92 g
RM 14 MTE	14	19	13,5	16,8	36	60	78	25,400	M14x2	38	15°	5.690	129 g
RM 14 MTE x1,5	14	19	13,5	16,8	36	60	78	25,400	M14x1,5	38	15°	5.690	129 g
RM 14.12 MTE x1,5	12	19	13,5	16,8	36	60	78	25,400	M14x1,5	38	15°	5.690	135 g
RM 16 MTE	16	21	15	19,3	42	66	87	28,575	M16x2	40	15°	6.720	189 g
RM 16 MTE x1,5	16	21	15	19,3	42	66	87	28,575	M16x1,5	40	15°	6.720	189 g
RM 16.14 MTE x1,5	14	21	15	19,3	42	66	87	28,575	M16x1,5	40	15°	6.720	195 g
RM 18 MTE	18	23	17	21,8	46	72	95	31,750	M18x1,5	44	15°	8.140	267 g
RM 18.16 MTE	16	23	17	21,8	46	72	95	31,750	M18x1,5	44	15°	8.140	275 g
RM 20 MTE	20	25	18	24,3	50	78	103	34,925	M20x1,5	47	15°	9.370	348 g
RM 25 MTE	25	31	22	29,6	60	94	124	42,850	M24X2	58	15°	13.540	600 g

tutte le quote in millimetri - all sizes in millimeter - toutes dimensions en millimètres

filettature sinistre:

left-hand threads:

filétages gauches:

RML .. MTE

RML .. MTE

RML .. MTE

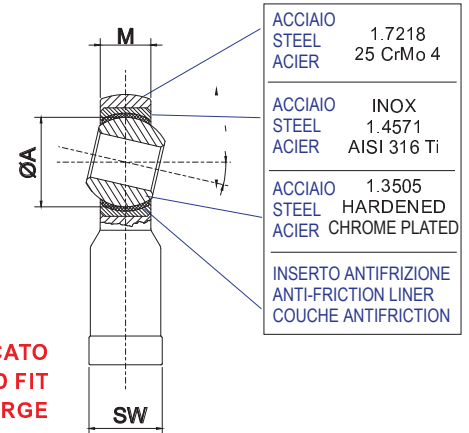
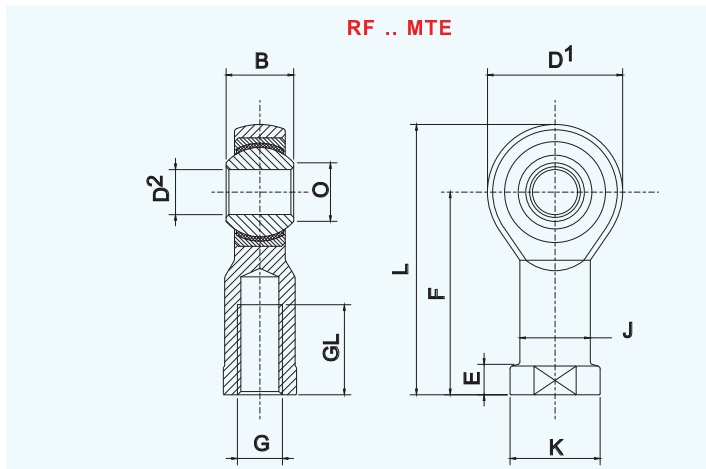
RODOBAL

ROD ENDS and SPHERICAL BEARINGS

serie per
MOTORSPORT

MOTORSPORT
range

séries pour
MOTORSPORT



GIOCO PRECARICATO
PRELOADED FIT
JEU PRECHARGE

TIPO - TYPE	D ²	B	M	O	D ¹	F	L	Ø A	G	GL		daN	massa
TOLLERANZA - TOLERANCE	H7				h6							carico stat. max.	
RF 8 MTE	8	12	9,0	10,4	24	36	48	15,875	M8x1,25	16	13°	2.550	46 g
RF 10 MTE	10	14	10,5	12,9	28	43	57	19,050	M10x1,5	20	13°	3.480	76 g
RF 10 MTEx1,25	10	14	11	12,9	28	43	57	19,050	M10x1,25	20	13°	3.480	76 g
RF 12 MTE	12	16	12,0	15,4	32	50	66	22,225	M12x1,75	22	13°	4.220	115 g
RF 12 MTE x1,25	12	16	12	15,4	32	50	66	22,225	M12x1,25	22	13°	4.220	115 g
RF 14 MTE x1,5	14	19	13,5	16,8	36	57	75	25,400	M14x1,5	25	15°	5.690	170 g
RF 16 MTE	16	21	15,0	19,3	42	64	85	28,575	M16x2	28	15°	6.770	230 g
RF 16 MTE x1,5	16	21	15	19,3	42	64	85	28,575	M16x1,5	28	15°	6.770	230 g

tutte le quote in millimetri - all sizes in millimeter - toutes dimensions en millimètres

filettature sinistre:

left-hand threads:

filétages gauches:

RFL .. MTE

RFL .. MTE

RFL .. MTE

NOVITA' - TESTE A SNODO A MASSA RIDOTTA

TIPO - TYPE	D ²	B	M	O	D ¹	F	L	Ø A	G	GL		daN	massa
TOLLERANZA - TOLERANCE	H7				h6							carico stat. max.	
RF 6 SE.AL	6	9	6,75	8,9	20	30	40	12,700	M6x1	12	13°	890	14 g
RM 6 SE.AL	6	9	6,75	8,9	20	36	46	12,700	M6x1	22	13°	600	11,8 g

TESTE A SNODO CON CORPO IN ALLUMINIO

Produzione speciale su commessa, per impieghi di quantità.

Sono già state prodotte teste a snodo mis. 6 (Ø foro 6 mm, filettatura M6x1).

Corpo in alluminio AlMgSi1, tornito ed anodizzato, boccia in acciaio, inserto antifrizione in PTFE rinforzato, anello interno in acciaio temperato.

Costruzione esente da manutenzione, accoppiamento sferico con gioco normale (non precaricato).

Sono particolarmente idonee per l'impiego su semplici tiranti o rinvi, dove sia prioritario il contenimento della massa.

E' richiesta una quantità minima di 30 pz.



RODOBAL

SNODI SFERICI - SPHERICAL BEARINGS - ROTULES

MOTORSPORT

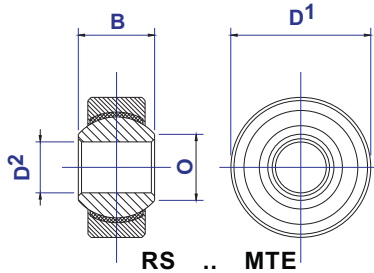
MOTORSPORT

MOTORSPORT

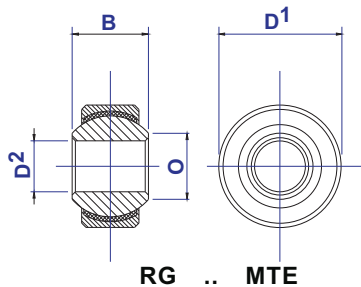
SERIE **RS..MTE**
RG..MTE

SERIES **RS..MTE**
RG..MTE

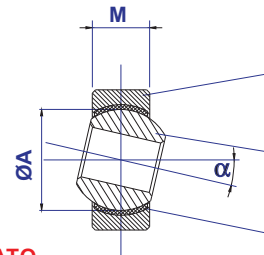
SERIE **RS..MTE**
RG..MTE



RS .. MTE



RG .. MTE

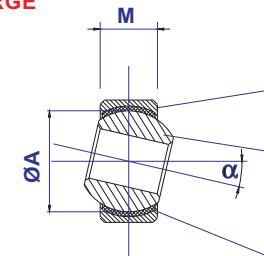


ACCIAIO 45S20
STEEL ZINC-COATED
ACIER

ACCIAIO 100Cr6
STEEL HARDENED
ACIER CHROME PLATED

INSERTO ANTIFRIZIONE
ANTI-FRICTION LINER
COUCHE ANTIFRICTION

GIOCO PRECARICATO
PRELOADED FIT
JEU PRECHARGE



ACCIAIO INOX
STEEL AISI 316 Ti
ACIER

ACCIAIO 100Cr6
STEEL HARDENED
ACIER CHROME PLATED

INSERTO ANTIFRIZIONE
ANTI-FRICTION LINER
COUCHE ANTIFRICTION

TIPO TYPE TYPE	D ²	D ¹	B	M	O	ØA	STATIC MAX. Co-daN _B RADIAL	COPPIA DISTACCO BREAKAWAY TORQUE N/dm	α°	PESO WEIGHT POIDS
RS 8 MTE	8	22	12	9	10,4	15,875	2780	1 - 10	14°	23 g
RS 10 MTE	10	26	14	10,5	12,9	19,050	3900	2 - 14	13°	38 g
RS 12 MTE	12	30	16	12	15,4	22,225	5300	6 - 18	13°	58 g
RS 14 MTE	14	34	19	13,5	16,8	25,400	6980	6 - 20	16°	83 g
RS 16 MTE	16	38	21	15	19,3	28,575	8780	8 - 22	15°	115 g
RS 18 MTE	18	42	23	16,5	21,8	31,750	10630	8 - 22	15°	150 g
RS 20 MTE	20	46	25	18	24,3	34,925	13020	8 - 25	14°	200 g
RG 8 MTE.19	8	19	12	9	10,4	15,875	2780	1 - 10	14°	17 g
RG 10 MTE.22	10	22	14	10,5	12,9	19,050	3900	2 - 14	13°	26 g
RG 12 MTE.26	12	26	16	12	15,4	22,225	5300	6 - 18	13°	41 g
RG 14 MTE.29	14	29	19	13,5	16,8	25,400	6980	6 - 20	16°	56 g
RG 16 MTE.32	16	32-31,5	21	15	19,3	28,575	8780	8 - 22	15°	75 g
RG 18 MTE.33	18	33	20	16	20,4	28,575	9576	8 - 22	10°	80 g
RG 18 MTE.35	18	35	23	16,5	21,8	31,750	10630	8 - 22	15°	97 g
RG 20 MTE.40	20	40	25	18	24,3	34,925	13020	8 - 25	14°	142 g

LUBRIFICAZIONE:

inserto antifrizione con PTFE, rinforzato, senza manutenzione.

LUBRICATION:

reinforced PTFE anti-friction liner, maintenance free.

GRAISSAGE:

couche antifriction avec PTFE, renforcé, sans entretien.

GIOCO:

accoppiamento precaricato, senza gioco.

CLEARANCE:

Preloaded tight fit, no clearance.

JEU:

accouplement serré, sans jeu.

MONTAGGIO:

tabella con interferenza e tolleranza di montaggio disponibile su richiesta.

MOUNTING:

data-sheet with tolerances and fits for mounting available on request.

APPLICATION:

table avec interference et tolérance de montage disponible sur demande.